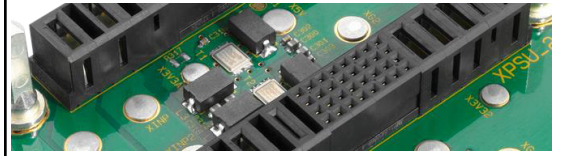


**3U VPX Power BACKPLANE**  
**1 Slot – AC Input Voltage**

**VITA 62**



**Key Features:**

- Compliant to VITA 62 baseline specification
  - 1 Slot 3U J0 Connector
  - Input Voltage 85-265VAC
  - Max Current 6A at 115V or 3A at 230V
  - Max Output Power 680W (90% eff.)
  - M4 studs for VS1/12V (max. 40A), VS3/5V (max. 40A) and GND (max. 80A)
  - M3 studs for VS2/3.3V (max. 20A) and V\_Aux/3.3V (max. 6A)
  - PCB size 128.50mm x 38.92mm x 3.0 mm
  - Fail, Reset and Sense signals
  - Flexible keying and alignment mechanism
  - Enable and Inhibit signals accesible
  - System Management Interface on the backplane (I2CA, I2CB)
  - Compatible to standard VPX 3U AC PSU, such as the Hartmann 600W AC Power Supply part num. D575.00646
  - Operating temperature: -40° - +85°C
  - Storage temperature: -55°C - +85°C
  - Flammability rating: UL94-V0
  - Custom assembly or modification on request
- **Order number: B1931AM220**

Front side

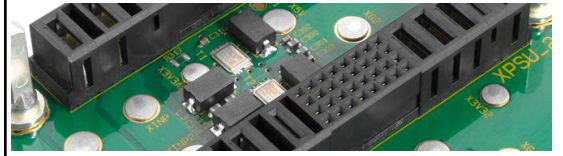


Back side



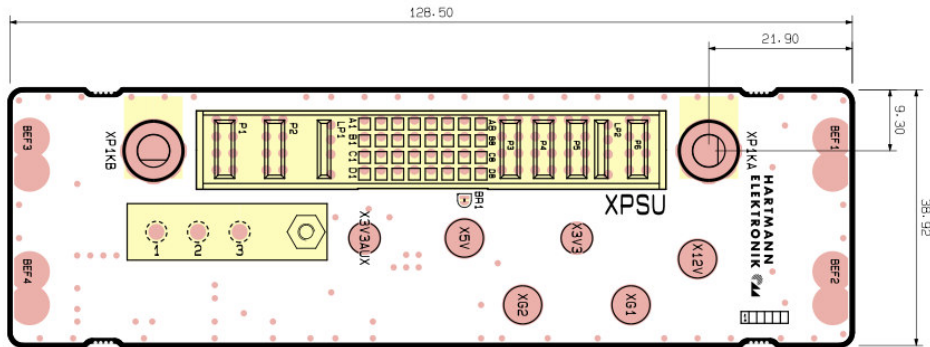
**3U VPX Power BACKPLANE**  
**1 Slot – AC Input Voltage**

**VITA 62**

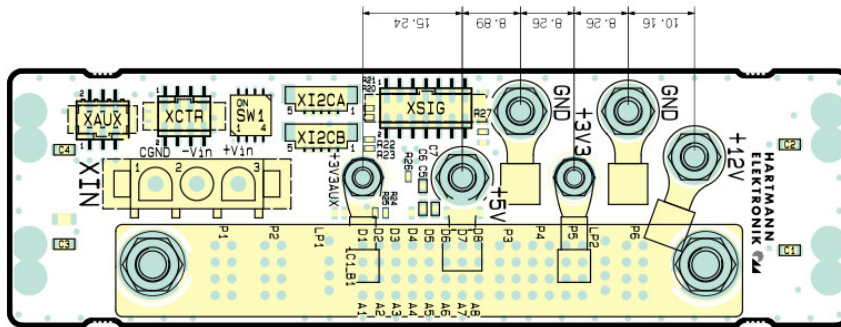


**1) Drawings**

Front side



Back side

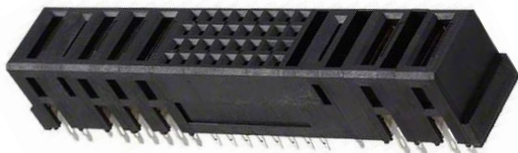


**2) P0 Power Connector (XPSU)**

For 3U PSU Plug-In Modules according to VITA 62.0 with 680W max power.

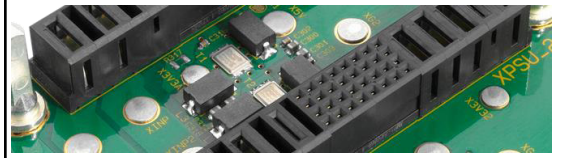
(R4, R6, R8, R9, R10 is optional if sense lines cannot be connected)

Connector Tyco 1-6450869-4



**3U VPX Power BACKPLANE**  
**1 Slot – AC Input Voltage**

VITA 62



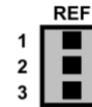
**3) Power Input Connector (XIN)**

3 Pin Mate-N-Lok Connector.

1: CASE GND

2, 3: Input voltage 36-500V (AC)

Connector AMP 350429-1



1	CASE GND
2	-Vin
3	+Vin

Mating with:  
 TE 1586849-1

**4) Current Capability:**

- VS1: +12V                      40 A
- VS2: +3.3V                     20 A
- VS3: +5V                        40 A
- +3.3V AUX                      6 A
- +/- 12V AUX                  1.5 A

**5) Control Signals (Connector XSIG)**

1,3: Return path for signals, grounded on VPX-Backplane

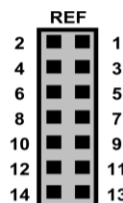
2: Failure in PSU (out, L)

4: System Reset (in, L)

5,6: User defined signals - for future use

7,8: Nuclear event detection

10-14: Sense for voltage adjustment



1	Signal Return
2	FAIL
3	Signal Return
4	SYSRESET
5	UD1
6	UD0
7	NED Return

8	NED
9	VS1 Sense Return
10	VS1 Sense
11	VS2 Sense Return
12	VS2 Sense
13	VS3 Sense Return
14	VS3 Sense

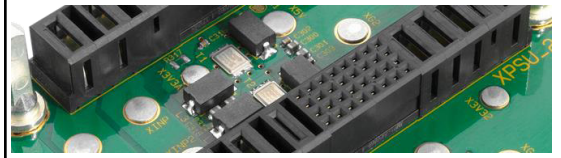
Connector FCI 95615-014TRLF



Mating with: VPX Utility Cable such as  
 Hartmann cable part number F006.04691

**3U VPX Power BACKPLANE**  
**1 Slot – AC Input Voltage**

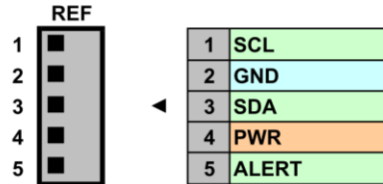
VITA 62



**6) IMPB(A+B) I<sup>2</sup>C Connector**

- 1,3: Serial clock and data, IPMBA (SM0,SM1) of VPX
- 4: IPMB-Power is connected at VPX-Backplane
- 5: Not available from PSU

Connector Molex 53398-0571

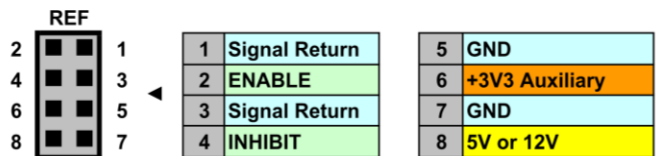


Mating with:  
PicoBlade Cable  
Assembly 15134

**7) Connector for control of VPX Power Backplane (XCTR)**

- 1,3: Return path for signals, grounded on VPX-Backplane
- 2: Enable PSU (in, L)
- 4: Inhibit PSU (in, L)

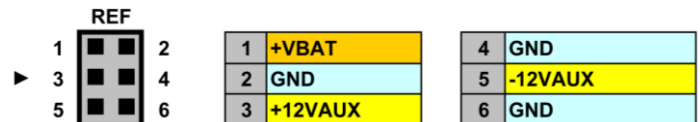
Connector FCI 95615-008LF



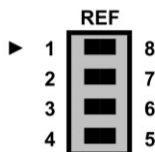
**8) Connector for auxiliary voltages (XAUX)**

- 1: Auxiliary voltage ~ 3.0 V (2.55-3.5V, for setups, volatile memories etc.)

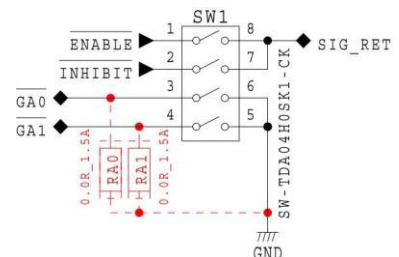
Connector FCI 98424-G52-06LF



**9) Switch SW1**



	OPEN	CLOSED
1-8	PSU ENABLE - ext. controlled	PSU enabled
2-7	PSU INHIBIT - ext. controlled	PSU inhibited
3-6	GA Bit 0 = 0	GA Bit 0 = 1
4-5	GA Bit 1 = 0	GA Bit 1 = 1



**Germany**

Hartmann Electronic GmbH  
Phone: +49 711 13 98 90  
Fax: +49 711 8 66 11 91  
[vertrieb\\_he@kontron.com](mailto:vertrieb_he@kontron.com)  
[www.hartmann-electronic.com](http://www.hartmann-electronic.com)

**USA**

Kontron  
Fabian Hemmann  
Phone: +1 937-324-2420  
Mobile: +1 937 346 7878  
[fabian.hemmann@us.kontron.com](mailto:fabian.hemmann@us.kontron.com)  
[www.hartmann-electronic.com](http://www.hartmann-electronic.com)

**France**

Kontron Modular Computers S.A.S.  
Serge Pichat  
Phone: +33 (0)9 66 44 03 15  
Mobile: +33 (0)6 82 62 16 00  
[Serge.pichat@kontron.com](mailto:Serge.pichat@kontron.com)  
[www.hartmann-electronic.com](http://www.hartmann-electronic.com)

**India**

Hartmann Electronic GmbH  
Vivek Deshpande  
Phone: +1 91 20 66 74 51 23  
[Vivek.Deshpande@kontron.com](mailto:Vivek.Deshpande@kontron.com)  
[www.hartmann-electronic.com](http://www.hartmann-electronic.com)