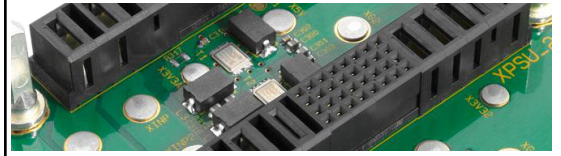


**3U VPX Power BACKPLANE**  
**2 Slot – AC Input Voltage**

**VITA 62**

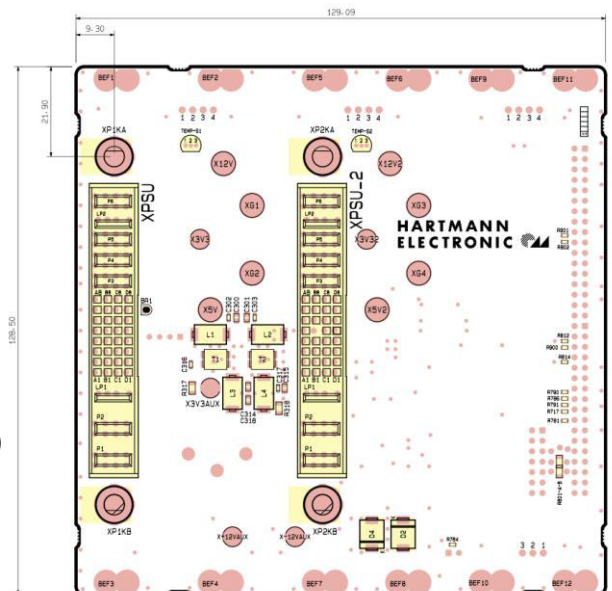


**Key Features:**

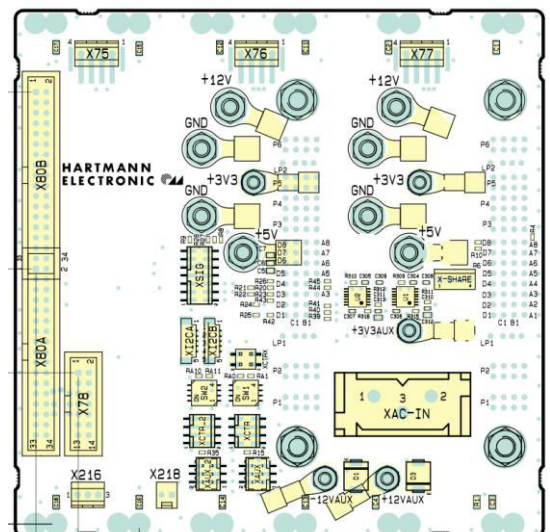
- Compliant to VITA 62 baseline specification
- 2 Slot 3U J0 Connector
- Input Voltage 85-265VAC
- Max Input Current 17A per Slot
- M4 studs for VS1/12V (max. 80A) and GND (max. 160A)  
 M3 studs for VS2/3.3V (max. 40A), VS3/5V (max. 80A)
- PCB size 128.50mm x 129.09mm x 5.4 mm
- Fail, Reset and Sense signals
- Flexible keying and alignment mechanism
- Enable and Inhibit signals accesible
- System Management Interface on the backplane (I2CA, I2CB)
- Compatible to standard VPX 3U AC PSU, such as the Hartmann 600W AC Power Supply p/n D575.00646
- Can be used with Shelfmanagers, such as the Hartmann Shelfmanager part num. 1H00004161
- Operating temperature: -40° - +85°C
- Storage temperature: -55°C - +85°C
- Flammability rating: UL94-V0
- Custom assembly or modification on request

▪ **Order number: 2.H0002051**

Front side



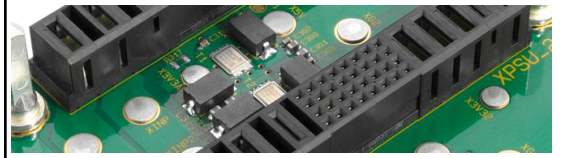
Back side





**3U VPX Power BACKPLANE**  
**2 Slot – AC Input Voltage**

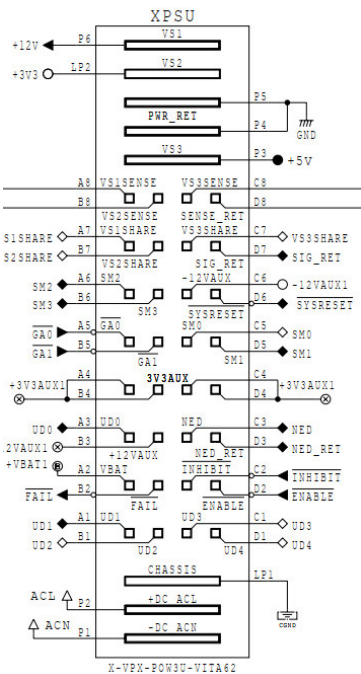
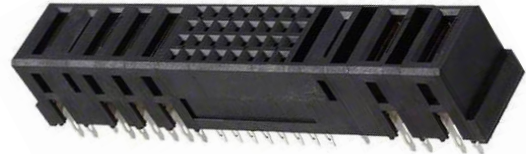
VITA 62



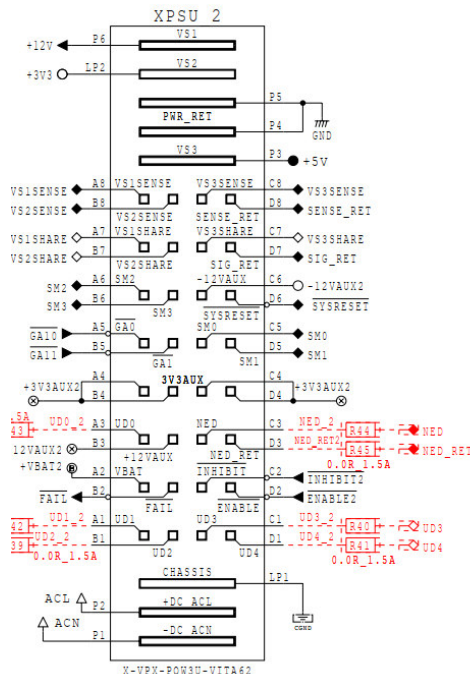
**2) J0 Power Connector (XPSU)**

For 3U PSU Plug-In Modules according to VITA 62.0.

Connector Tyco 1-6450869-4



Connector 1



Connector 2

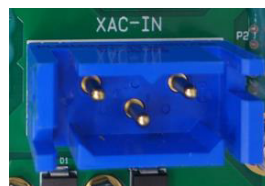
**3) Power Input Connector (XIN)**

3 Pin Connector.

1: CASE GND

2, 3: Input voltage 36-500V (AC)

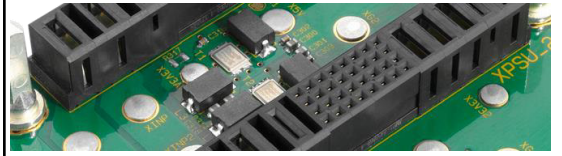
Connector Positronic PLBH3W3M93ST30A1



1	CASE GND
2	-Vin
3	+Vin

**3U VPX Power BACKPLANE**  
**2 Slot – AC Input Voltage**

**VITA 62**



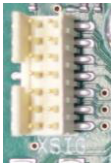
**4) Current Capability:**

- VS1: +12V                      80 A
- VS2: +3.3V                    40 A
- VS3: +5V                        80 A
- +3.3V AUX                    12 A
- +/- 12V AUX                 3 A

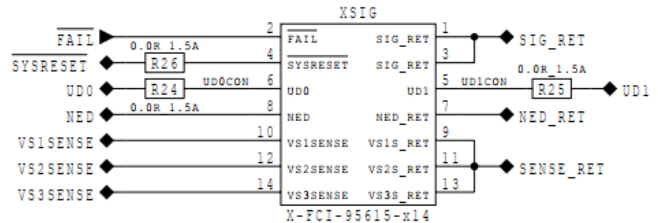
**5) Utility (XSIG)**

Special signals like sense signals for connection to the power supply are at the connector XSIG.

Connector Connector FCI/Berg 95615-014TRLF



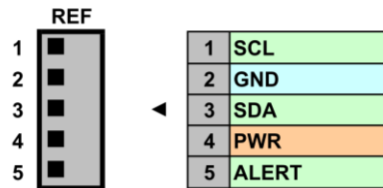
Mating with:  
 Hartmann F006.00450



**6) IMPB(A+B) I<sup>2</sup>C Connector**

- 1,3: Serial clock and data, IPMBA (SM0,SM1) of VPX
- 4: IPMB-Power is connected at VPX-Backplane
- 5: Not available from PSU

Connector Molex 53398-0571

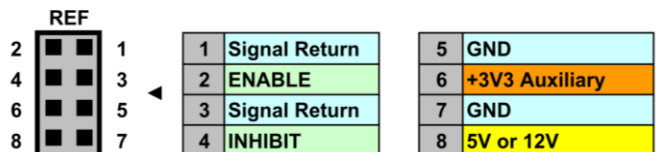
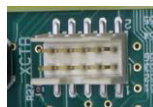


Mating with:  
 PicoBlade Cable  
 Assembly 15134

**7) Connector for control of VPX  
 Power Backplane (XCTR)**

- 1,3: Return path for signals, grounded on VPX-Backplane
- 2: Enable PSU (in, L)
- 4: Inhibit PSU (in, L)

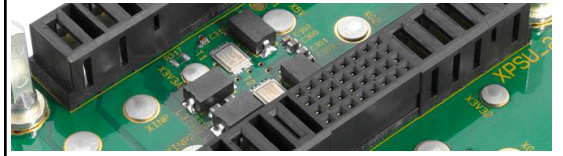
**Two** Connectors FCI 95615-008LF





**3U VPX Power BACKPLANE**  
**2 Slot – AC Input Voltage**

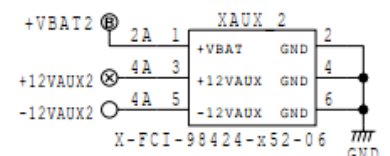
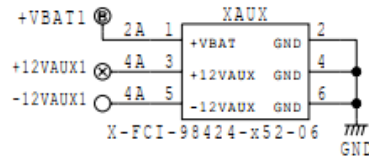
**VITA 62**



### 8) Connector for auxiliary voltages (XAUX)

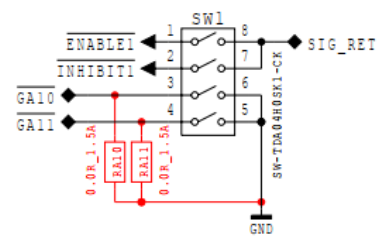
1: Auxiliary voltage ~ 3.0 V (2.55-3.5V, for setups, volatile memories etc.)

Connector FCI 98424-G52-06LF



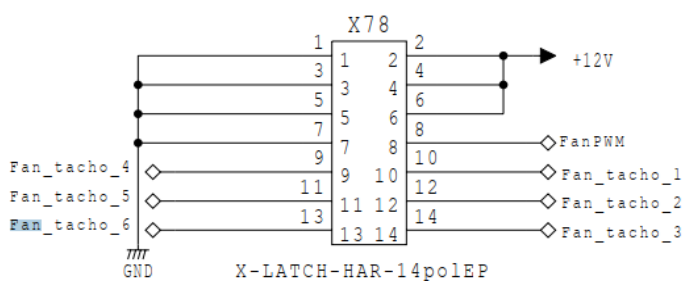
### 9) Switch SW1, SW2

	REF	OPEN	CLOSED
▶ 1	8	1-8 PSU ENABLE - ext. controlled	PSU enabled
2	7	2-7 PSU INHIBIT - ext. controlled	PSU inhibited
3	6	3-6 GA Bit 0 = 0	GA Bit 0 = 1
4	5	4-5 GA Bit 1 = 0	GA Bit 1 = 1



### 10) Connector Fans (XFAN)

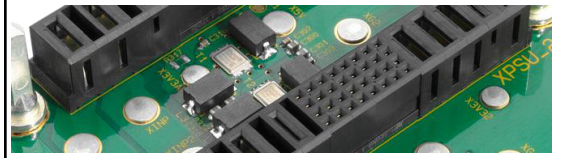
1	GND
2	Fan_Power
3	GND
4	Fan_Power
5	GND
6	Fan_Power
7	GND
8	Fan_PWM
9	Fan_TACHO-4
10	Fan_TACHO-1
11	Fan_TACHO-5
12	Fan_TACHO-2
13	Fan_TACHO-6
14	Fan_TACHO-3



Connector FCI95615-014TRLF

**3U VPX Power BACKPLANE**  
**2 Slot – AC Input Voltage**

**VITA 62**



**11) Connector Shelfmanager (XSM)**

1	+5V STDBY
3	+5V
5	ACFAIL
7	SYSFAIL
9	SYSRESET
11	Fan PWM
13	1-Wire-TSENSE
15	DEG1
17	FAIL1
19	ENABLE1
21	Fan tachometer 1
23	Fan tachometer 2
25	Fan tachometer 3
27	12V Fan supply
29	FANREG
31	GND
33	GND

2	+5VMON
4	+3V3MON
6	-12VMON
8	+12VMON
10	GND
12	I2C SCL
14	I2C SDA
16	DEG2
18	FAIL2
20	ENABLE2
22	Fan tachometer 4
24	Fan tachometer 5
26	Fan tachometer 6
28	12V Fan supply
30	FANREG
32	GND
34	GND

Connector Harting  
 09185346329



For connection with Shelfmanagers, such as the Hartmann Shelfmanager part num. 1H00004161

**Germany**

Hartmann Electronic GmbH  
 Phone: +49 711 13 98 90  
 Fax: +49 711 8 66 11 91  
[vertrieb\\_he@kontron.com](mailto:vertrieb_he@kontron.com)  
[www.hartmann-electronic.com](http://www.hartmann-electronic.com)

**USA**

Kontron  
 Fabian Hemmann  
 Phone: +1 937-324-2420  
 Mobile: +1 937 346 7878  
[fabian.hemmann@us.kontron.com](mailto:fabian.hemmann@us.kontron.com)  
[www.hartmann-electronic.com](http://www.hartmann-electronic.com)

**France**

Kontron Modular Computers S.A.S.  
 Serge Pichat  
 Phone: +33 (0)9 66 44 03 15  
 Mobile: +33 (0)6 82 62 16 00  
[Serge.pichat@kontron.com](mailto:Serge.pichat@kontron.com)  
[www.hartmann-electronic.com](http://www.hartmann-electronic.com)

**India**

Hartmann Electronic GmbH  
 Vivek Deshpande  
 Phone: +1 91 20 66 74 51 23  
[Vivek.Deshpande@kontron.com](mailto:Vivek.Deshpande@kontron.com)  
[www.hartmann-electronic.com](http://www.hartmann-electronic.com)

All data is for information purposes only and not guaranteed for legal purposes. Information has been carefully checked and is believed to be accurate; however, no responsibility is assumed for inaccuracies. Specifications are subject to change without notice.