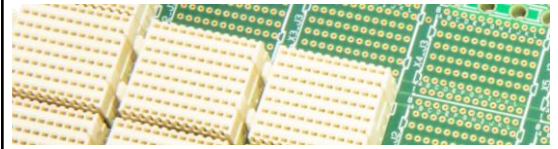


**3U CompactPCI Serial
Monolithic BACKPLANE
6+1 Slot System Slot Left**

**PICMG CPCI-S.0
R2.0 (2015)**

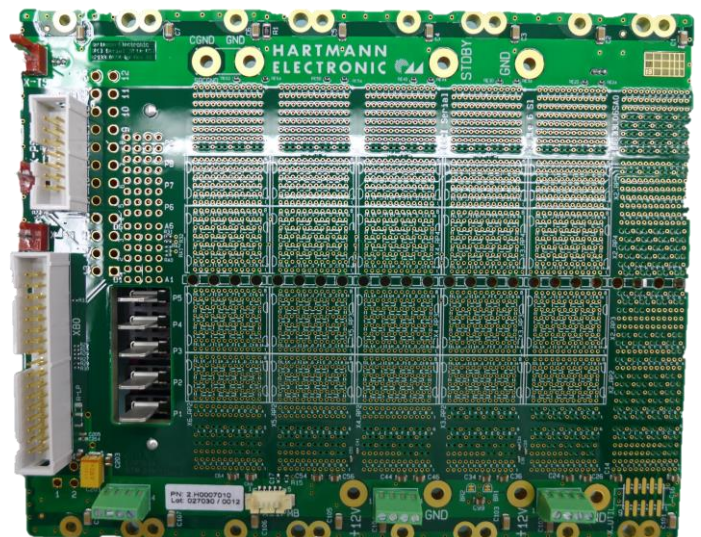
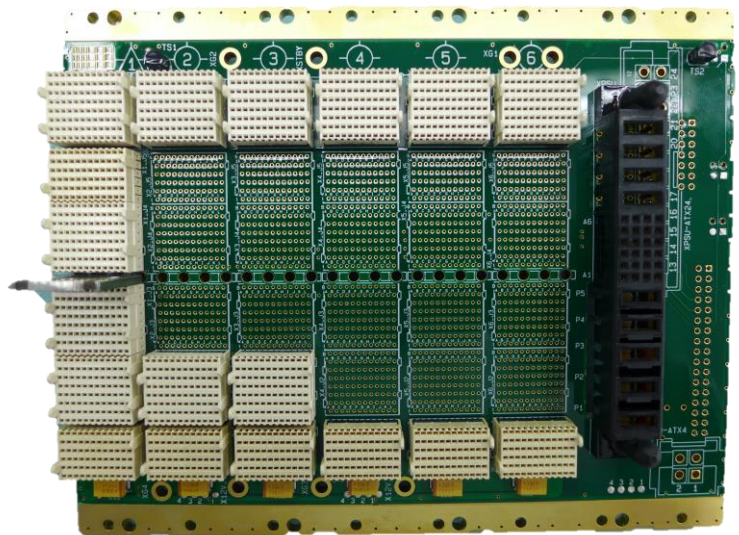


Key Features:

- Compliant to PICMG CPCI-S.0 R2.0 baseline specification
- 6 Slots CompactPCI Serial **without Rear IO**
- Single-Star topology for:
PCI Express, SATA, USB and Ethernet
- 1 x CPCI S.0 System Slot left (CPU)
- 5 x CPCI S.0 Peripheral Slot
- **1 power supply slot 8 HP right**
- M3 studs for alternative power entry
- Max. Input current per backplane
12V = 40A, 5V Standby = 6A
- PCB size 128.50mm x 161.11mm x 4.0 mm
- 4 HP from slot to slot (20.32 mm)
- High speed connections for
USB, SATA, PCIe (Gen. 3), Ethernet
- Guiding element in system slot
- System Management Bus on the backplane (IPMB)
- with geographical addressing
- ENABLE and XPSN signals can be accessed
- System Reset Signal
- Wake Signal
- Operating temperature: -40° - +85°C
- Storage temperature: -55°C - +85°C
- Flammability rating: UL94-V0
- Custom assembly or modification on request

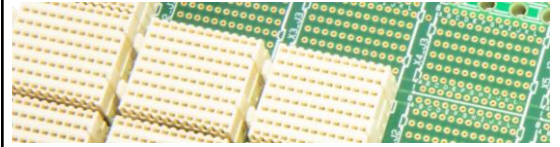
▪ **Order number: 2.H0007010**

Front side



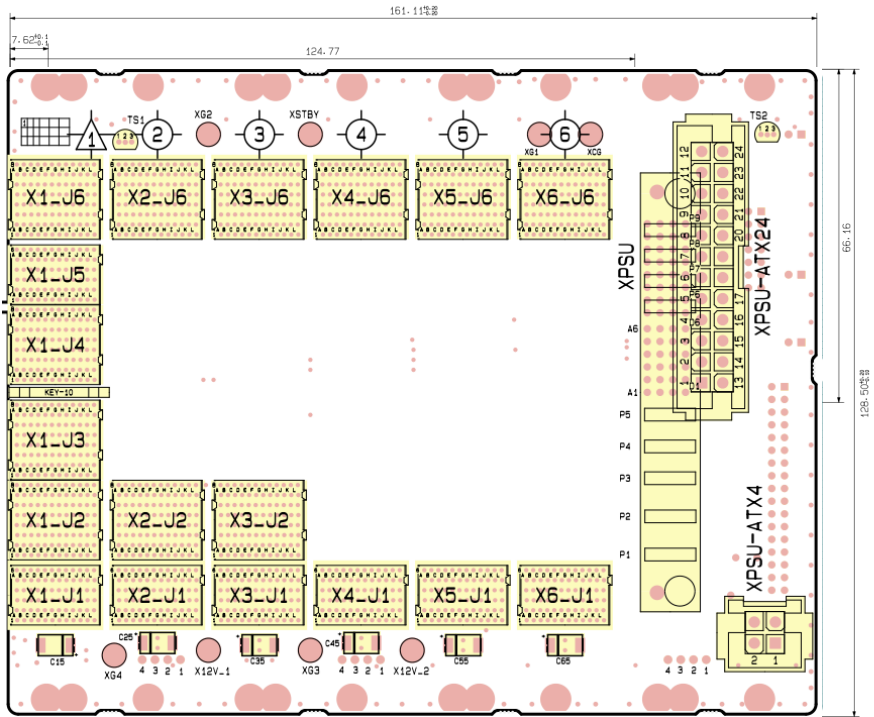
**3U CompactPCI Serial
Monolithic BACKPLANE
6+1 Slot System Slot Left**

**PICMG CPCI-S.0
R2.0 (2015)**

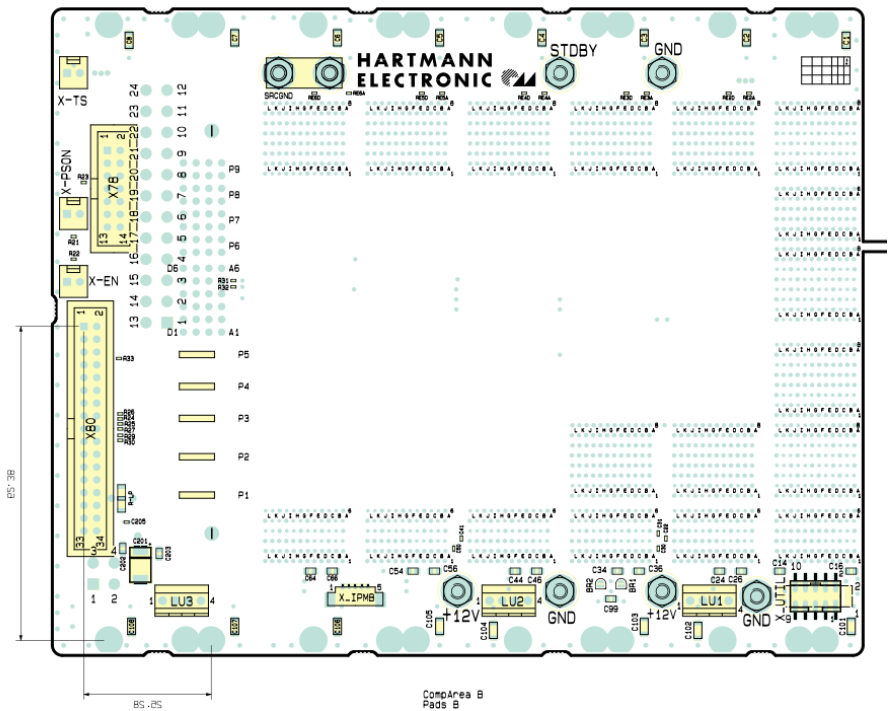


1) Drawings

Front side

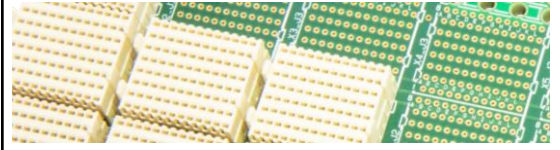


Back side

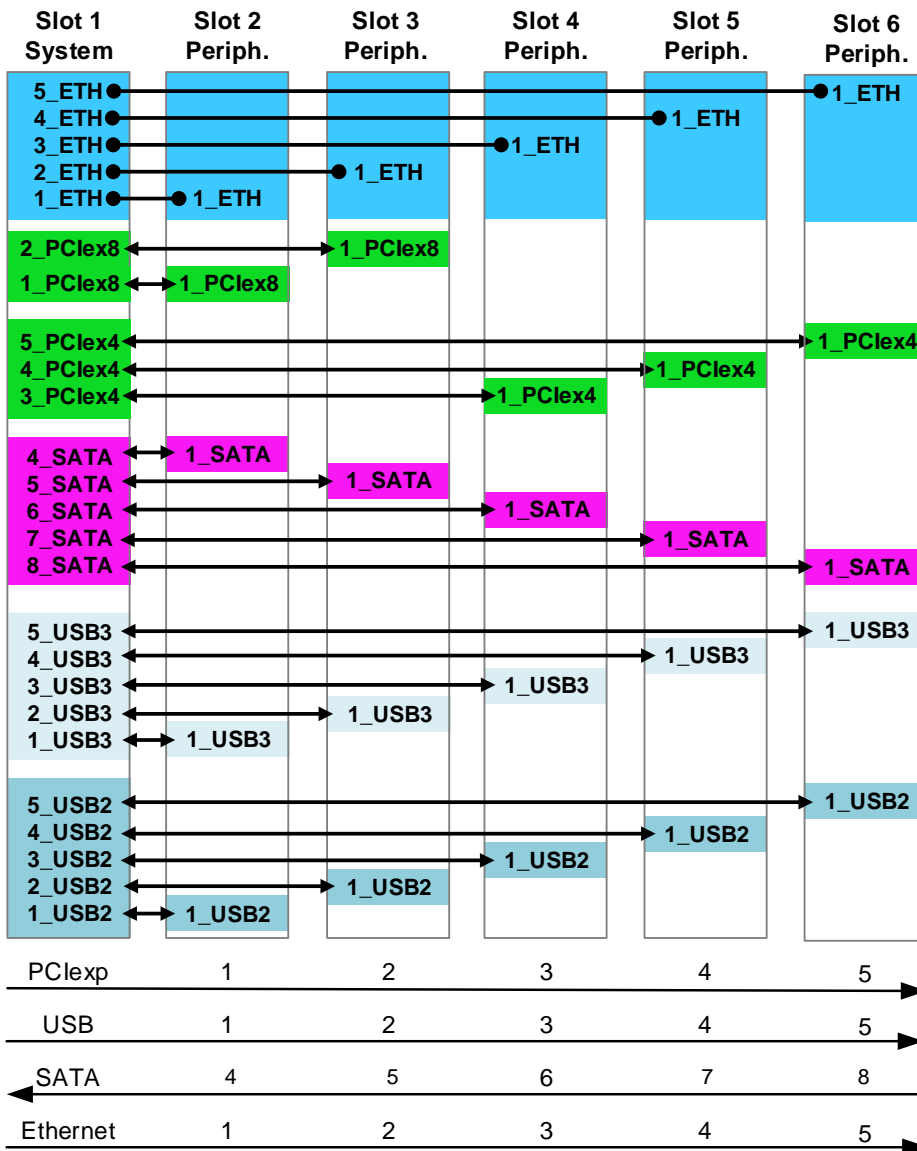


**3U CompactPCI Serial
Monolithic BACKPLANE
6+1 Slot System Slot Left**

**PICMG CPCI-S.0
R2.0 (2015)**

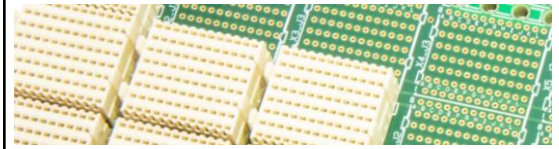


2) Backplane Topology



**3U CompactPCI Serial
Monolithic BACKPLANE
6+1 Slot System Slot Left**

**PICMG CPCI-S.0
R2.0 (2015)**



3) Pin Assignment IPMB Connector



X_IPMB Pin Assignment

| Pin | Signal |
|-----|----------|
| 1 | IPMB_SCL |
| 2 | GND |
| 3 | IPMB_SDA |
| 4 | IPMB_PWR |
| 5 | nc |

Mating with: Molex 51021-0500

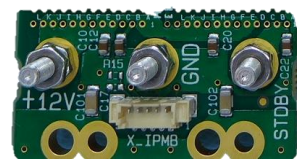
4) Power via Serial-PSU or M3 screws

By the power connector (FCI 51940-473LF) 8HP compactPCI Serial power supplies such as the Hartmann AC-PSU (part number D575.0520) can be plugged directly on the backplane.

The 12V main operating voltages, 5V Standby and GND can be supplied alternatively with M3 studs.

Max. Input current per backplane

12V = 40A, 5V Standby = 6A



Germany

HARTMANN ELECTRONIC GmbH
Motorstr. 43
D-70499 Stuttgart
Phone: +49 711 13 98 90
Fax: +49 711 8 66 11 91
info@hartmann-electronic.com
www.hartmann-electronic.com

USA

Hartmann Electronic
Fabian Hemmann
202 N. Limestone Street, Suite 320
Springfield, OH 45503
Phone: 937-324-2420
Fax: 937-324-2425
Mobile: +1 937 346 7878
fabian.hemmann@hartmann-electronic.com
www.hartmann-electronic.com

France

**HARTMANN ELECTRONIC France/
Phoenix Mecano France**
Serge PICHAT
76 rue du Bois Galon
94124 Fontenay-sous-Bois cedex
Phone: +33 9 66 44 03 15
Mobile: +33 6 82 62 16 00
serge.pichat@hartmann-electronic.com
www.hartmann-electronic.com

India

Phoenix Mecano (India) Ltd.
Mr. Vivek Deshpande
388 Bhare, Taluka Mulshi,
Post Gotawade, Pune - 412 108
Phone: +91 20 66 74 51 23
Fax: +91 20 22 92 92 05
vivek.deshpande@phoenix-mecano.com
www.phoenixmecano.co.in

All data is for information purposes only and not guaranteed for legal purposes. Information has been carefully checked and is believed to be accurate; however, no responsibility is assumed for inaccuracies. Specifications are subject to change without notice.