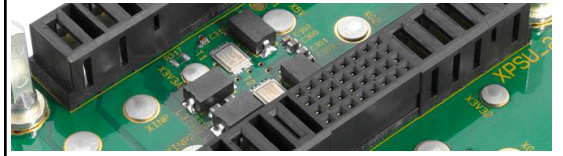


3U VPX Power BACKPLANE
1 Slot – DC Input Voltage

VITA 62



Key Features:

- Compliant to VITA 62 baseline specification
 - 1 Slot 3U J0 Connector
 - Low Input Voltage 18-36VDC
 - Max Current 40A
 - Max Output Power 680W (90% eff.)
 - M4 studs for VS1/12V (max. 40A)
VS3/5V (max. 40A) and GND (max. 80A)
 - M3 studs for VS2/3.3V (max. 20A)
and V_Aux/3.3V (max. 6A)
 - PCB size 128.50mm x 38.92mm x 3.0 mm
 - Fail, Reset and Sense signals
 - Flexible keying and alignment mechanism
 - Enable and Inhibit signals accesible
 - System Management Interface on the backplane (I2CA, I2CB)
 - Compatible to standard VPX 3U DC PSU, such as the
Hartmann 715W DC Power Supply part num. D575.00701
 - Operating temperature: -40° - +85°C
 - Storage temperature: -55°C - +85°C
 - Flammability rating: UL94-V0
 - Custom assembly or modification on request
- **Order number: B1931D4221**

Front side

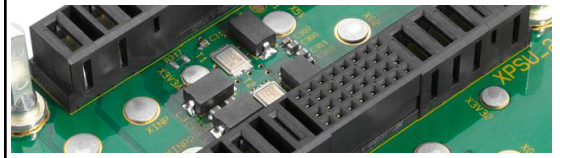


Back side



3U VPX Power BACKPLANE
1 Slot – DC Input Voltage

VITA 62



3) Current Capability:

- VS1: +12V 40 A
- VS2: +3.3V 20 A
- VS3: +5V 40 A
- +3.3V AUX 6 A
- +/- 12V AUX 1.5 A

4) Control Signals (Connector XSIG)

1,3: Return path for signals, grounded on VPX-Backplane

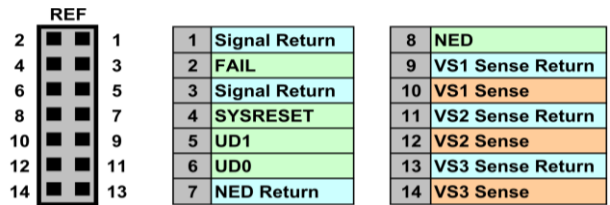
2: Failure in PSU (out, L)

4: System Reset (in, L)

5,6: User defined signals - for future use

7,8: Nuclear event detection

10-14: Sense for voltage adjustment



Connector FCI 95615-014TRLF



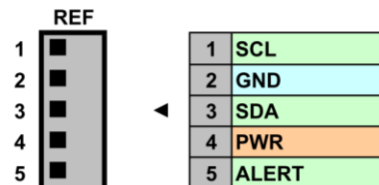
Mating with: VPX Utility Cable such as Hartmann cable part number F006.04691

5) IMPB(A+B) I²C Connector

1,3: Serial clock and data, IPMBA (SM0,SM1) of VPX

4: IPMB-Power is connected at VPX-Backplane

5: Not available from PSU



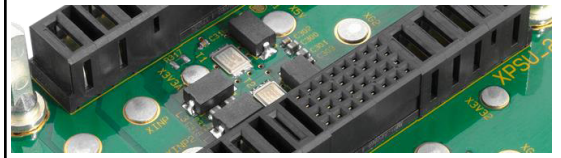
Connector Molex 53398-0571



Mating with: Molex 51021-0500 HE part number F006.01460

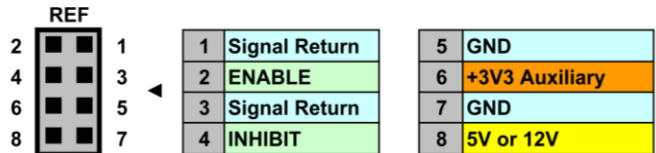
3U VPX Power BACKPLANE
1 Slot – DC Input Voltage

VITA 62



6) Connector for control of VPX Power Backplane (XCTR)

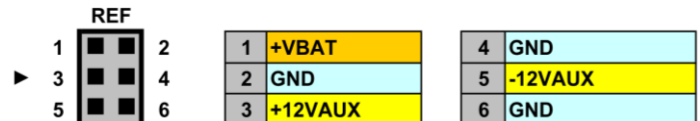
1,3: Return path for signals, grounded on VPX-Backplane
 2: Enable PSU (in, L)
 4: Inhibit PSU (in, L)



Connector FCI 95615-008LF

7) Connector for auxiliary voltages (XAUX)

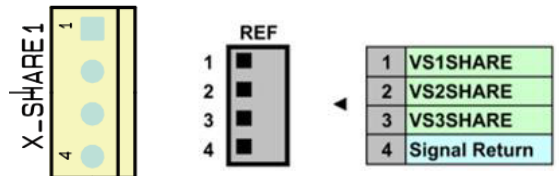
1: Auxiliary voltage ~ 3.0 V (2.55-3.5V, for setups, volatile memories etc.)



Connector FCI 98424-G52-06LF

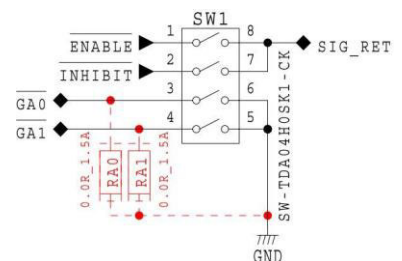
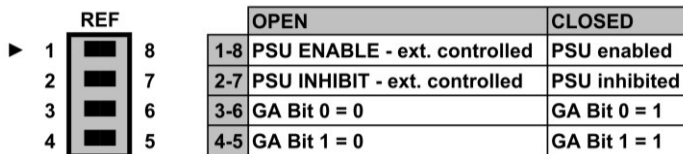
8) Current share connector (X_SHARE1)

1, 2, 3: Current share for VS1-3 3U (12V / 3V3 / 5V)
 6U (12V / 12V / 5V)



Connector Tyco 171825-4

9) Switch SW1



(RA0, RA1 resistors are optional for fixed geographic address)

Germany

Hartmann Electronic GmbH
 Phone: +49 711 13 98 90
 Fax: +49 711 8 66 11 91
vertrieb.he@kontron.com
www.hartmann-electronic.com

USA

Kontron
 Fabian Hemmann
 Phone: +1 937-324-2420
 Mobile: +1 937 346 7878
fabian.hemmann@us.kontron.com
www.hartmann-electronic.com

France

Kontron Modular Computers S.A.S.
 Serge Pichat
 Phone: +33 (0)9 66 44 03 15
 Mobile: +33 (0)6 82 62 16 00
Serge.pichat@kontron.com
www.hartmann-electronic.com

India

Hartmann Electronic GmbH
 Vivek Deshpande
 Phone: +1 91 20 66 74 51 23
Vivek.Deshpande@kontron.com
www.hartmann-electronic.com